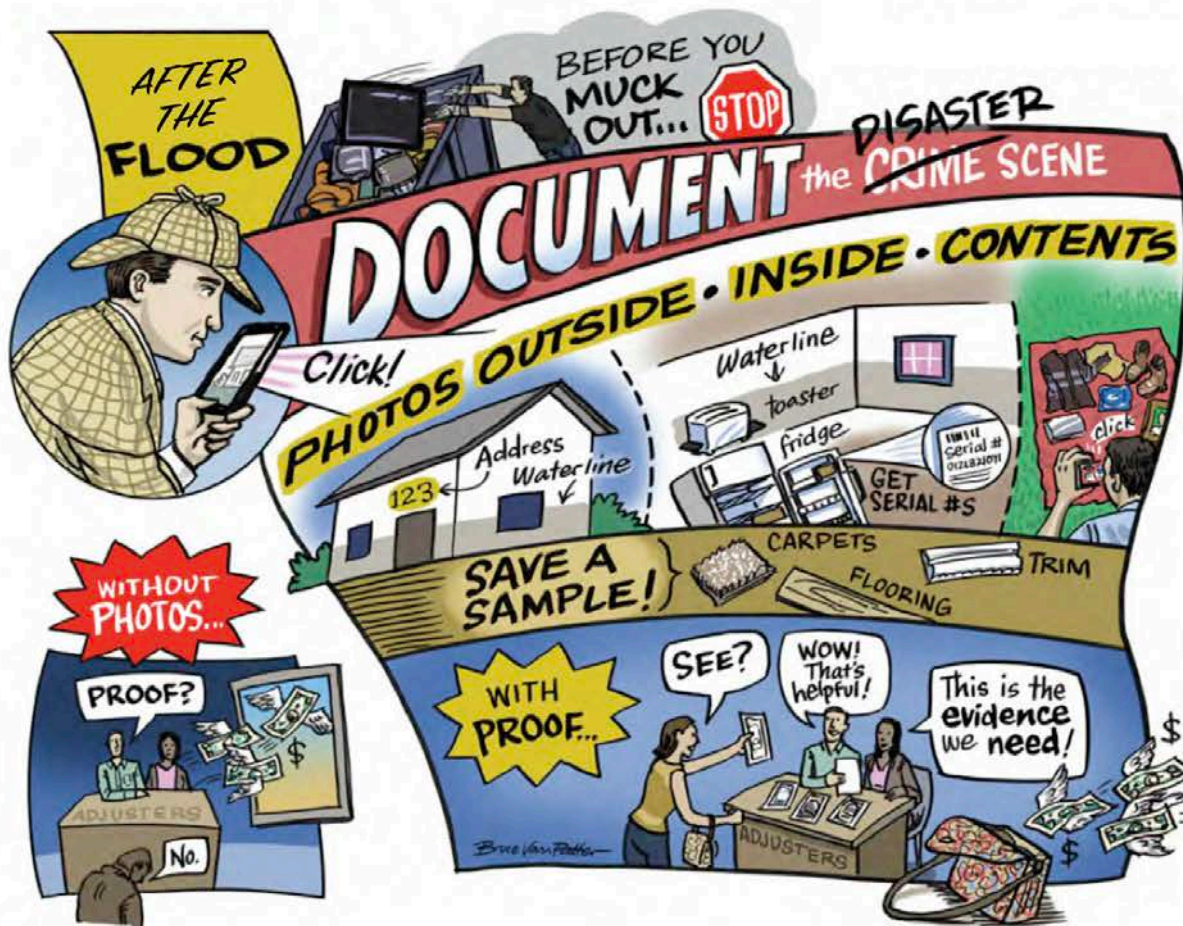


After The Flood

DOCUMENT THE OUTSIDE, INSIDE, CONTENTS

Your photos can save you THOUSANDS of dollars!



Remember: Pics = Proof! Photos Are Essential!

OUTSIDE

- Street view of front of house
- ALL sides of house with foundation
- Waterline mark clearly defining height

INSIDE

- All walls EACH ROOM
- Ceiling and Floor EACH ROOM
- Waterline mark EACH ROOM

CONTENTS (As many as needed)

- EVERY piece of personal property you're throwing away
- Inside cabinets + drawers
- Front & back of all appliances & electronic items WITH model & serial numbers

IF SAFE, keep SAMPLES of the following:

- Carpet + floor coverings
- Base trim, crown trim, chair-rail trim
- ANY unusual or high-end materials

COMPASS 82

Compass82.org